



DISCOVER UNRIVALED ELEGANCE

BLINDSMITH WINDOW SOLUTIONS / WINDOW COVERINGS

Welcome to Blindsmith window coverings, where quality meets innovation. Our mission is to provide you with superior Window Covering Solutions that enhance the aesthetics of your space.

At Blindsmith, we pride ourselves on our commitment to excellence, which is reflected in every aspect of our products. Our roller blind systems are engineered with precision & crafted with the finest materials to ensure durability, functionality, and style.

Experience the luxury of our carefully curated fabrics, expertly selected to meet the highest standards of quality and durability. Whether you desire subtle textures, bold patterns or timeless classics, our extensive range offers something for every taste and style.

Why choose Blindsmith

1) UNMATCHED QUALITY : Each Blindsmith product is crafted with precision and attention to detail, guaranteed longevity, and performance.

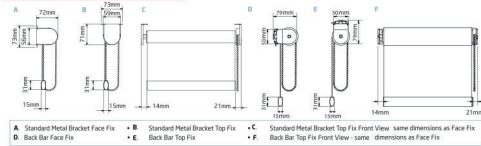
2) CUSTOMIZATION OPTIONS : Tailor your window coverings to suit your unique preferences, with our wide array of customization options, including fabric choices, control mechanisms and sizing.

3) EXPERT CRAFTSMANSHIP : Our team of skilled artisans combines traditional techniques with modern technology to deliver window solutions / window coverings of unparalleled craftsmanship.

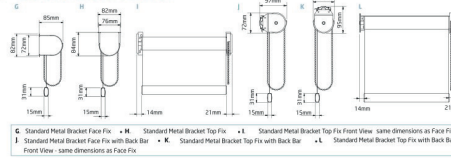
4) EXCEPTIONAL SERVICE : From the initial consultation to installation & beyond, our dedicated team is committed to providing you with impeccable craftsmanship and dedication to customer satisfaction.

Universal Bracket Dimensions

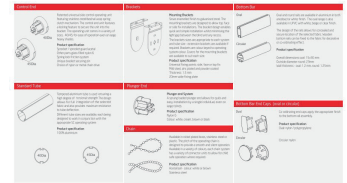
40 DIA CONTROL TUBE SYSTEM



45 DIA CONTROL TUBE SYSTEM



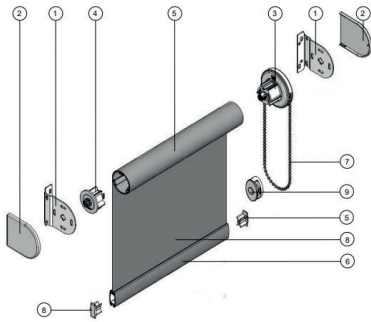
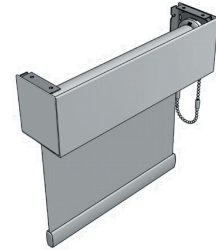
Side Control Components



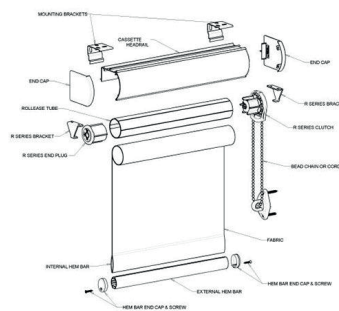
3" SQUARE FASCIA

3" Fascia can be used with the System 40 + and System 45

Code: R3337



Roller Shade Cassette Example Diagram



CERTIFICATES & WARRANTY

1) ENERGY SAVER - THE FABRIC BLOCKS MORE THAN 80% OF SOLAR HEAT , 98% OF HARMFUL UV . REDUCES 25 - 40 % ENERGY CONSUMPTION. REDUCED CO2 EMISSIONS, RADIATION HEAT AND BETTER TEMPERATURE CONTROL.

2) FIRE RETARDANT - INCASE OF FIRE VERY LITTLE SMOKE IS EMITTED AND VERY LITTLE CHANCE OF SMOKE GAS DEVELOPING IN THE EVNT OF FIRE. NO AFTERGLOW , NO POLLUTANTS, DOES NOT ROT AND PREVENTS MILDEW. ALL MEETS ISO STANDARD & BRITISH STANDARD CERTIFICATION.

3) ANTI BACTERIAL - THE FABRIC CONTAINS ANTI BACTERIAL EFFECT IN CERTIFIED SGS - ASTM G21.22. THE EXPONENTIAL SPREAD OF THE MOST COMMON GERMS IN HOSPITALS (KLEBSIELLA PNEUMONIAE, STAPHYLOCOCCUS AUREUS) IS STOPPED THEREBY SETTING FIRST AND FOREMOST NEW BENCHMARKS IN HEALTHCARE REGARDING ROOM HYGIENE. USING THIS FABRIC THERE WILL BE A PERMANENT PROTECTION AGAINST THE FORMATION AND TRANSMISSION OF BACTERIA.

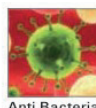
4) GREENGUARD - THE FABRICS HAVE BEEN AWARDED US GREENGUARD & GREENGUARD (CHILDREN & SCHOOL) CERTIFICATION WHICH PROVES THEY HAVE NO HARMFUL SUBSTANCES TO HUMAN BODY AND ARE SAFE TO USE IN ANY HUMAN ENVIRONMENT. THIS FABRIC REDUCES THE RISK OF ALLERGIES PARTICULARLY AMONG ELDERLY PEOPLE OR THOSE WITH WEAK IMMUNE SYSTEMS.

5) CONFIDENCE IN TEXTILES - THE FABRICS ARE CERTIFIED BY OEKO - TEX STANDARD 100. THIS MEANS OVER THE LIFE CYCLE OF OUR PRODUCTS INSTALLATION WE HAVE A RELATIVELY SMALL ENVIRONMENTAL IMPACT. ITS NON - ENDOCRINE DISRUPTING CHEMICALS, NON-VOLATILE ORGANIC COMPOUNDS, LEAD FREE, HEAVY METAL FREE AND CHEMICAL ADHESIVE FREE.

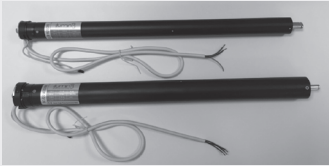
6) ECOSPECIFIER GLOBAL - GLOBALLY CERTIFIED ECO-FRIENDLY PRODUCT

7) THE FABRICS CARRY 10 YEARS WARRANTY. ITS GRADE 8 BLUE SCALE COLOR FASTNESS TESTED CERTIFIED WITH ISO 105 - B02. THE FABRICS ARE GUARANTEED AGAINST UV IMPACT THAT CAN INCLUDE DISCOLORATION AND STRUCTURAL BREAKDOWN.

Energy Saver

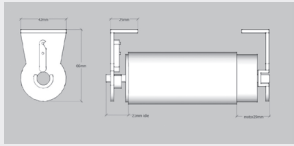


Both 230v with built in radio receiver (RT)

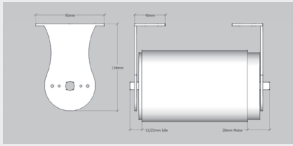


IM35EW-6/28 suits 44mm tube. Torque (6nm) speed 28rpm. Min/max width 650/3000mm
 IM45EW/10/26 suits 58mm tube. Torque (10nm) speed 26rpm. Min/max width 690/4000mm

IM45EW spacing and bracket size



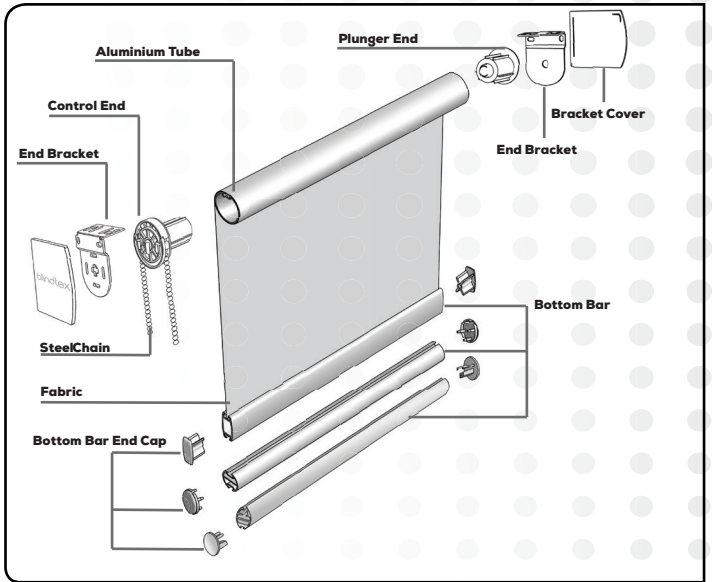
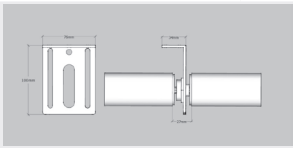
IM58EW spacing and bracket size



Intermediate bracket with or without coupling



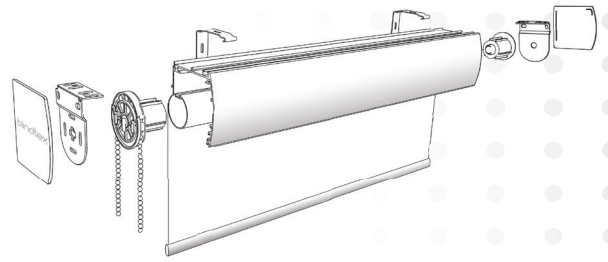
Intermediate bracket spacing



Roller Blinds Technical Specifications

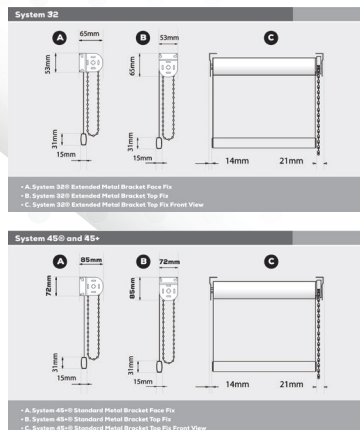
Roller System Components

<p>Tube</p> <p>Side View End View</p> <p>The design allows for full integration of selected fabric and also provides maximum resistance to tube deflection.</p>	<p>Brackets (metal)</p> <p>White painted steel. The mounting brackets are designed to allow top, face or side fix installations. The bracket design enables quick and simple installation whilst minimising the light gap between the blind and any recess. Extension brackets are available if required. Brackets are colour keyed to operating system colour. Covers for the mounting brackets are available to suit each size.</p>
<p>Control End / Plunger End</p> <p>Side action control unit & plunger in engineered plastic. Unit locks into brackets. Clutch type suitable up to 9kg weight. Can be left or right control.</p>	<p>Chain</p> <p>Steel bubble chain, nickel plated 6mm pitch, 4.5mm diameter with connector</p>
<p>Bottom Bar</p> <p>Extruded PVC bottom bar in UPVC with 4 locking channels for fabrics & trims. 30mm x 15mm. Weight per linear meter - 200gm Aluminum anodized bottom bar profiles with color matched end caps. 28 x 19mm with fabric locking slot. Weight per linear meter - 460gm</p>	<p>Bottom Bar End Caps</p> <p>Co-ordinating end caps apply the appropriate finish to the bottom rail assembly.</p>

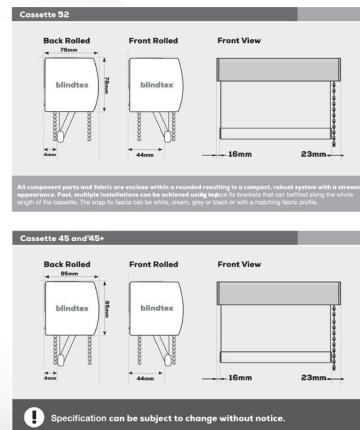


<p>Cassette System</p> <p>Cassette system, allows quick and easy mounting in either top fix or face position. Our patented design allows for reverse rolling and covering with matching or contrasting fabric.</p>	<p>Mounting Brackets</p> <p>Stove enamelled finish to galvanized steel. The mounting brackets are designed to allow top, face or side fix installations. The bracket design enables quick and simple installation whilst minimizing the light gap between the blind and any recess.</p>
<p>Chain Child Safety</p> <p>Available in nickel plated brass or plastic. The pitch of the operating chain is designed to provide a smooth operation. Available in a variety of colours, each chain system has a variety of connector units to allow for child safe operation where required.</p>	<p>Plastic End Cap</p> <p>Description</p>

Bracket Dimensions

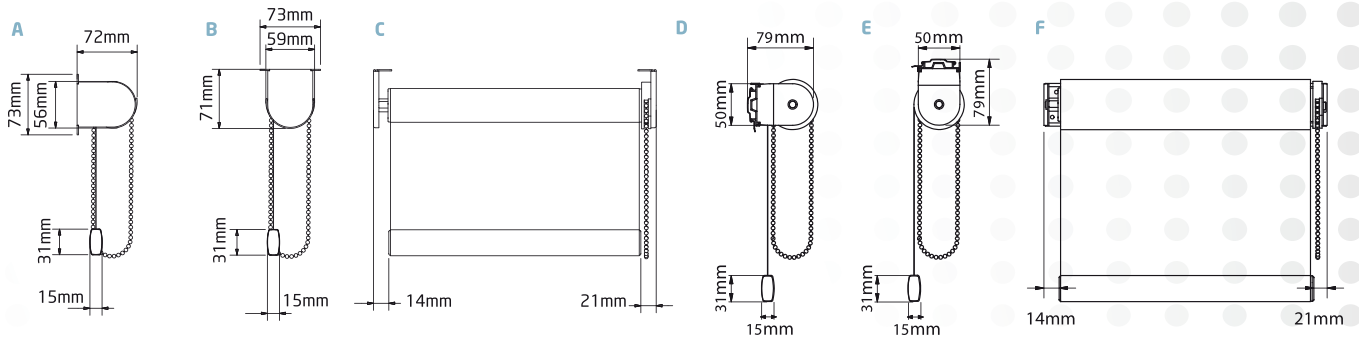


Cassette System



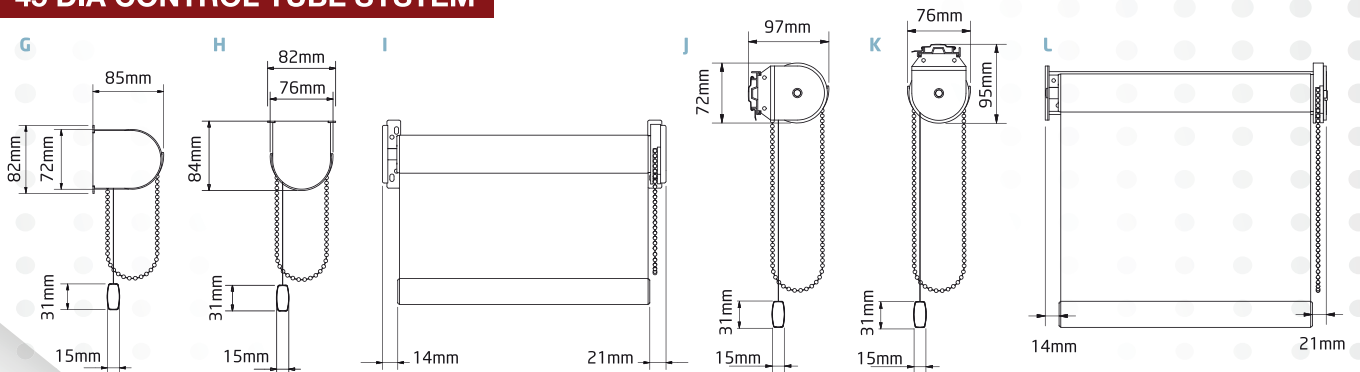
UNIVERSAL BRACKET DIMENSIONS

40 DIA CONTROL TUBE SYSTEM



- A.** Standard Metal Bracket Face Fix • **B.** Standard Metal Bracket Top Fix • **C.** Standard Metal Bracket Top Fix Front View - same dimensions as Face Fix
D. Back Bar Face Fix • **E.** Back Bar Top Fix • **F.** Back Bar Top Fix Front View - same dimensions as Face Fix

45 DIA CONTROL TUBE SYSTEM



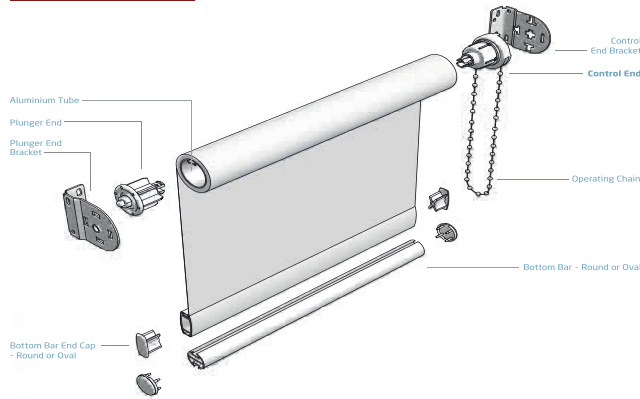
- G.** Standard Metal Bracket Face Fix • **H.** Standard Metal Bracket Top Fix • **I.** Standard Metal Bracket Top Fix Front View - same dimensions as Face Fix
J. Standard Metal Bracket Face Fix with Back Bar • **K.** Standard Metal Bracket Top Fix with Back Bar • **L.** Standard Metal Bracket Top Fix with Back Bar, Front View - same dimensions as Face Fix

SIDE CONTROL COMPONENTS

Control End	Brackets	Bottom Bar
<p>Patented universal side control operating unit featuring stainless steel/bezinal wrap spring clutch mechanism. The control end unit features a locking feature to secure the unit into the bracket. The operating unit comes in a variety of sizes, 40/45, for ease of operation even on large heavy shades.</p> <p>Product specification Sprocket / sprocket guard acetal Other parts glass filled nylon 6 Spring lock friction system Unique bracket securing pin Choice of nylon or metal chain drive</p>	<p>Mounting Brackets Stove enamelled finish to galvanised steel. The mounting brackets are designed to allow top, face or side fix installations. The bracket design enables quick and simple installation whilst minimising the light gap between the blind and any recess. The brackets sizes are appropriate to each system and tube size - extension brackets are available if required. Brackets are colour keyed to operating system colour. Covers for the mounting brackets are available to suit each size.</p> <p>Product specification Universal fixing points: side, face or top fix Mild steel, zinc plated and powder coated Thickness: 1.5 mm 20mm wide fixing plate</p>	<p>Oval and round rails are available in aluminium in both anodised or white finish. The oval range is also available in UPVC with white, beige or clear finish.</p> <p>The design of the rails allows for concealed and secure location of the selected fabric. Wooden bottom rails can be fixed to the fabric for decorative or co-ordinating effect.</p> <p>Product specification Overall dimensions oval: 15x30 mm Outside diameter round: 23mm Wall thickness - oval: 1.2 mm, round: 1.25mm</p>
Standard Tube	Plunger End	Bottom Bar End Caps (oval or circular)
<p>Tempered aluminium tube is used ensuring a high degree of torsional strength. The design allows for full integration of the selected fabric and also provides maximum resistance to tube deflection.</p> <p>Different tube sizes are available, each being designed to work in conjunction with the appropriate SC operating system.</p> <p>Product specification 100% aluminium</p>	<p>Plunger end System A sprung loaded plunger end allows for quick and easy installation by a single individual, even on larger blinds.</p> <p>Product specification Nylon 6 Colour: white, cream, brown or black</p>	<p>Co-ordinating end caps apply the appropriate finish to the bottom rail assembly.</p> <p>Product specification Oval: nylon / polypropylene Circular: nylon</p>
	Chain	
	<p>Available in nickel plated brass, stainless steel or plastic. The pitch of the operating chain is designed to provide a smooth and silent operation. Available in a variety of colours, each chain system has a variety of connector units to allow for child safe operation where required.</p> <p>Product specification Acetal ball - colour: white or brown Stainless steel</p>	

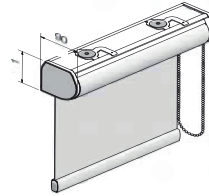
BLINDSMITH ROLLER SYSTEM

Normal System



Additional options

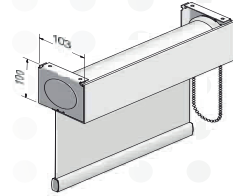
Cassette system



Cassette

All component parts and fabric are enclosed within a rounded fascia resulting in a compact, robust system with a streamlined appearance. Fast, multiple installations can be achieved using brackets that can be fitted along the whole length of the cassette.

Fascia system



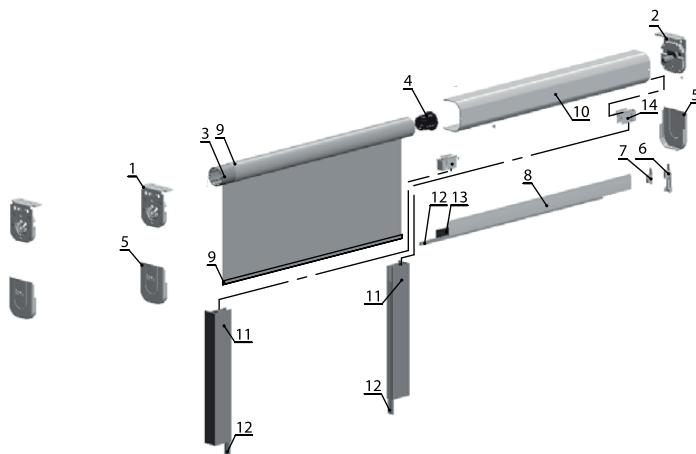
Fascia

With brackets manufactured from heavy gauge stove enamelled steel and fascia from aluminium, these units serve to house the roller shade and operating system. The use of cassette or fascia systems can allow window blinds to integrate more easily into particular glazing installations or to effect the desired aesthetic impact.

Back Bar Mounting Plate/ brackets

Stove enamelled finish to galvanised steel. The mounting brackets are designed to allow top or face fix installations. The bracket design enables quick and simple installation whilst minimising the light gap between the blind and any recess. Brackets sizes are appropriate to each system and tube size. Brackets are colour keyed to operating system colour. Covers for the mounting brackets are available to suit each size.

SYSTEM WITH SIDE GUARD CHENNAL



- 1 = Left side Bracket
- 2 = Right side Bracket
- 3 = Tube
- 4 = Endcup
- 5 = Bracket cover
- 6 = Bottom bar cover
- 7 = Bottom bar cover pin
- 8 = Bottom bar
- 9 = Bottom bar lock
- 10 = Fascia
- 11 = Side guard Channel
- 12 = Inbuild Brush
- 13 = Bottom Bar Brush
- 14 = Side Guard Channel Cap

MOTORIZED ROLLER BLINDS



**blind
smith**
BLINDS AND CURTAINS

