



DISCOVER UNRIVALED ELEGANCE

BLINDSMITH WINDOW SOLUTIONS

Welcome to Blindsmith window coverings, where quality meets innovation. Our mission is to provide you with superior Window Covering Solutions that enhance the aesthetics of your space.

At Blindsmith, we pride ourselves on our commitment to excellence, which is reflected in every aspect of our products. Our roller blind systems are engineered with precision & crafted with the finest materials to ensure durability, functionality, and style.

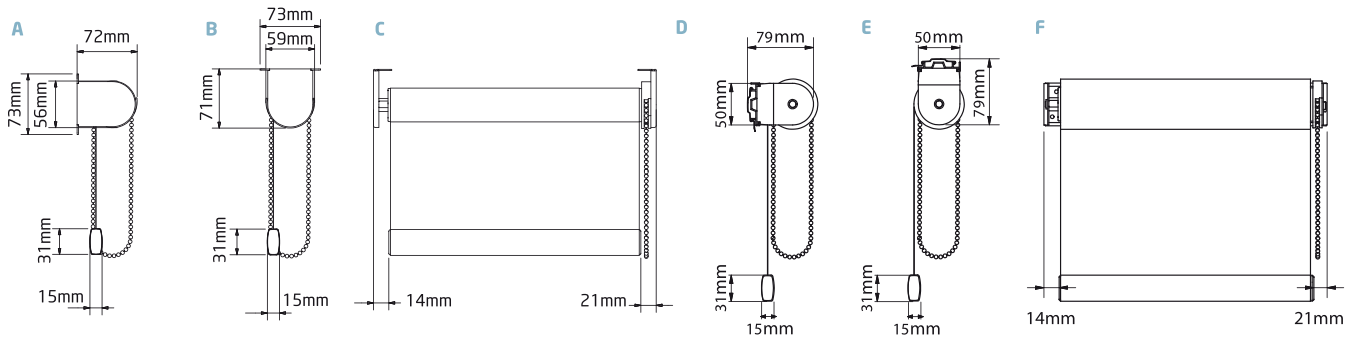
Experience the luxury of our carefully curated fabrics, expertly selected to meet the highest standards of quality and durability. Whether you desire subtle textures, bold patterns or timeless classics, our extensive range offers something for every taste and style.

Why choose Blindsmith

- 1) UNMATCHED QUALITY : Each Blindsmith product is crafted with precision and attention to detail , guaranteed longevity, and performance.
- 2) CUSTOMIZATION OPTIONS : Tailor your window coverings to suit your unique preferences, with our wide array of customization options, including fabric choices, control mechanisms and sizing.
- 3) EXPERT CRAFTSMANSHIP : Our team of skilled artisans combines traditional techniques with modern technology to deliver window solutions / window coverings of unparalleled craftsmanship.
- 4) EXCEPTIONAL SERVICE : From the initial consultation to installation & beyond, our dedicated team is committed to providing you with impeccable craftsmanship and dedication to customer satisfaction.

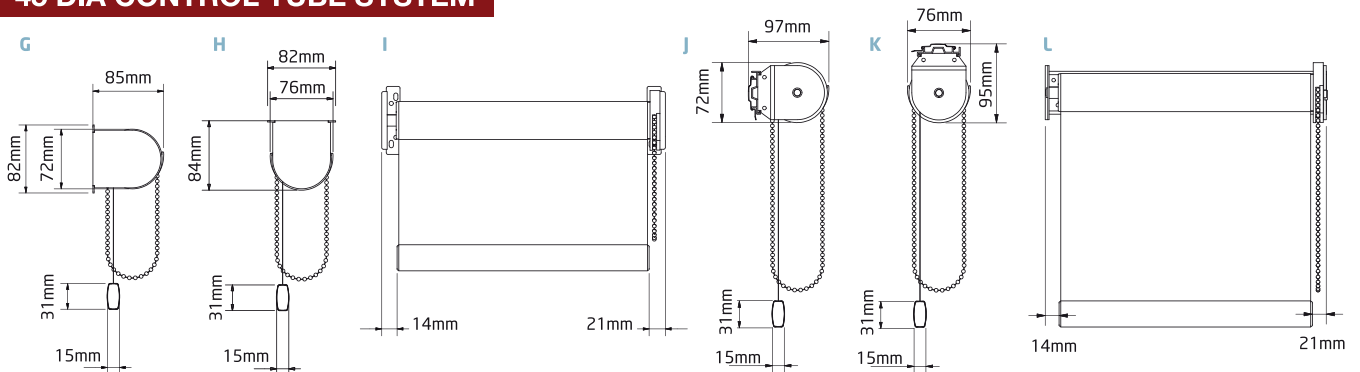
UNIVERSAL BRACKET DIMENSIONS

40 DIA CONTROL TUBE SYSTEM



- A.** Standard Metal Bracket Face Fix
- B.** Standard Metal Bracket Top Fix
- C.** Standard Metal Bracket Top Fix Front View - same dimensions as Face Fix
- D.** Back Bar Face Fix
- E.** Back Bar Top Fix
- F.** Back Bar Top Fix Front View - same dimensions as Face Fix

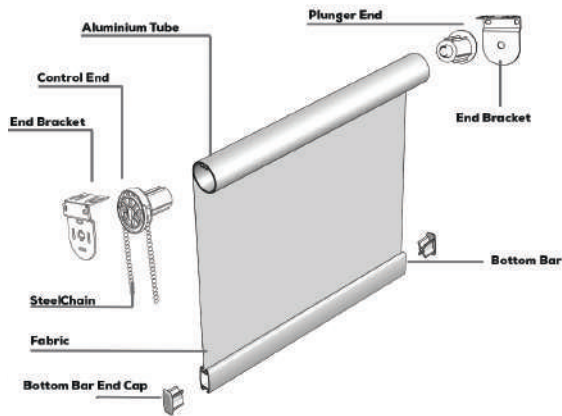
45 DIA CONTROL TUBE SYSTEM



- G.** Standard Metal Bracket Face Fix
- H.** Standard Metal Bracket Top Fix
- I.** Standard Metal Bracket Top Fix Front View - same dimensions as Face Fix
- J.** Standard Metal Bracket Face Fix with Back Bar
- K.** Standard Metal Bracket Top Fix with Back Bar
- L.** Standard Metal Bracket Top Fix with Back Bar, Front View - same dimensions as Face Fix

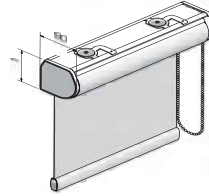
BLINDSMITH ROLLER SYSTEM

NORMAL SYSTEM



Additional options

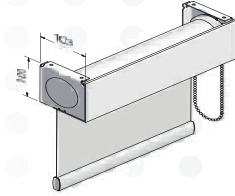
Cassette system



Cassette

All component parts and fabric are enclosed within a rounded fascia resulting in a compact, robust system with a streamlined appearance. Fast, multiple installations can be achieved using brackets that can be fitted along the whole length of the cassette.

Fascia system



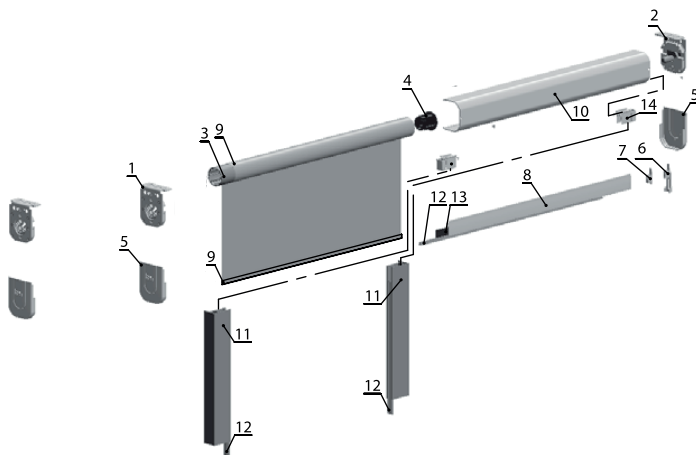
Fascia

With brackets manufactured from heavy gauge stove enamelled steel and fascia from aluminium, these units serve to house the roller shade and operating system. The use of cassette or fascia systems can allow window blinds to integrate more easily into particular glazing installations or to effect the desired aesthetic impact.

Back Bar Mounting Plate/brackets

Stove enamelled finish to galvanised steel. The mounting brackets are designed to allow top or face fix installations. The bracket design enables quick and simple installation whilst minimising the light gap between the blind and any recess. Brackets sizes are appropriate to each system and tube size. Brackets are colour keyed to operating system colour. Covers for the mounting brackets are available to suit each size.

SYSTEM WITH SIDE GUARD CHANNEL



- 1 = Left side Bracket
- 2 = Right side Bracket
- 3 = Tube
- 4 = Endcup
- 5 = Bracket cover
- 6 = Bottom bar cover
- 7 = Bottom bar cover pin
- 8 = Bottom bar
- 9 = Bottom bar lock
- 10 = Fascia (Optional)
- 11 = Side guard Channel(Optional)
- 12 = Inbuild Brush
- 13 = Bottom Bar Brush
- 14 = Side Guard Channel Cap

MOTORIZED ROLLER BLINDS



CERTIFICATES & WARRANTY

1) ENERGY SAVER - THE FABRIC BLOCKS MORE THAN 80% OF SOLAR HEAT , 98% OF HARMFUL UV . REDUCES 25 - 40 % ENERGY CONSUMPTION. REDUCED CO2 EMISSIONS, RADIATION HEAT AND BETTER TEMPERATURE CONTROL.

2) FIRE RETARDANT - INCASE OF FIRE VERY LITTLE SMOKE IS EMITTED AND VERY LITTLE CHANCE OF SMOKE GAS DEVELOPING IN THE EVNT OF FIRE. NO AFTERGLOW , NO POLLUTANTS, DOES NOT ROT AND PREVENTS MILDEW.ALL MEETS ISO STANDARD & BRITISH STANDARD CERTIFICATION.

3)ANTI BACTERIAL - THE FABRIC CONTAINS ANTI BACTERIAL EFFECT IN CERTIFIED SGS - ASTM G21.22.THE EXPONENTIAL SPREAD OF THE MOST COMMON GERMS IN HOSPITALS(KLEBSIELLA PNEUMONIAE, STAPHYLOCOCCUS AUREUS)IS STOPPED THEREBY SETTING FIRST AND FOREMOST NEW BENCHMARKS IN HEALTHCARE REGARDING ROOM HYGIENE. USING THIS FABRIC TEHRE WILL BE A PERMANENT PROTECTION AGAINST THE FORMATION AND TRANSMISSION OF BACTERIA.

4) - THE FABRICS ARE CERTIFIED BY OEKO - TEX STANDARD 100.THIS MEANS OVER THE LIFE CYCLE OF OUR PRODUCTS INSTALLATIONWE HAVE A RELATIVELY SMALL ENVIRONMENTAL IMPACT. ITS NON - ENDOCRINE DISRUPTING CHEMICALS, NON-VOLATILE ORGANIC COMPOUNDS, LEAD FREE, HEAVY METAL FREE AND CHEMICAL ADHESIVE FREE.

5) GREENGUARD - THE FABRICS HAVE BEEN AWARDED US GREENGUARD & GREENGUARD(CHILDREN & SCHOOL) LED FREE -LED FREE FABRICS IS AN INNOVATIVE SOLUTION THAT ADDRESSES CONCERNS ABOUT ENVIRONMENTAL SUSTAINABILITY AND HEALTH. THIS FABRIC REDUCES THE RISK OF ALLERGIES PARTICULARLY AMONG ELDERLY PEOPLE OR THOSE WITH WEAK IMMUNE SYSTEMS.

6)ECOSPECIFIER GLOBAL - GLOBALLY CERTIFIED ECO-FRIENDLY PRODUCT

7) THE FABRICS CARRY10 YEARS WARRANTY. ITS GRADE 8 BLUE SCALE COLOR FASTNESS TESTED CERTIFIED WITH ISO105 - B02.THE FABRICS ARE GUARANTEED AGAINST UV IMPACT THAT CAN INCLUDE DISCOLORATION AND STRUCTURAL BREAKDOWN.



ENERGY SAVING



ANTI-BACTERIA





**blind
smith**
BLINDS AND CURTAINS