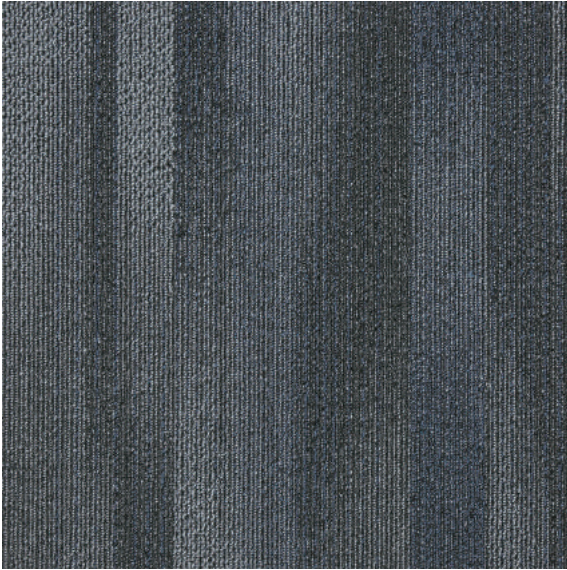




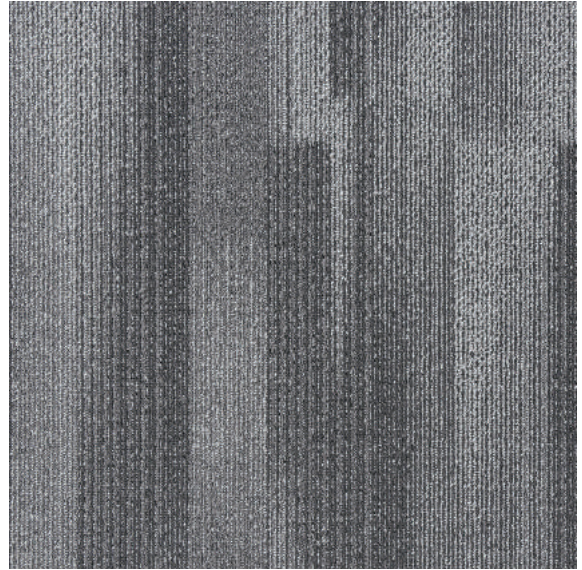
EXO

CUSHION-BACKED CARPETS

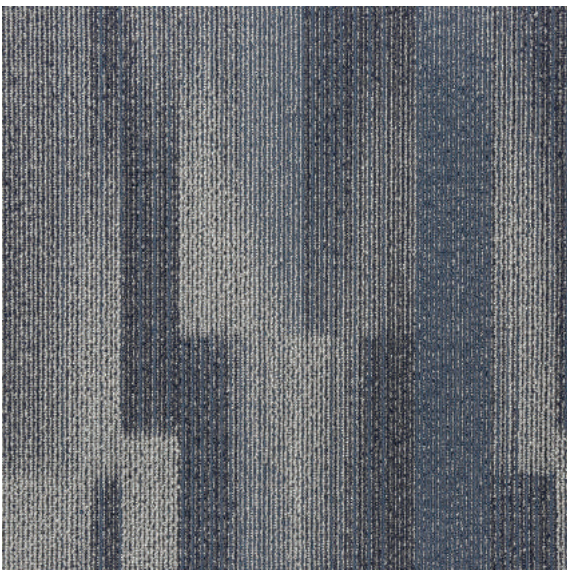
TH 200 Series



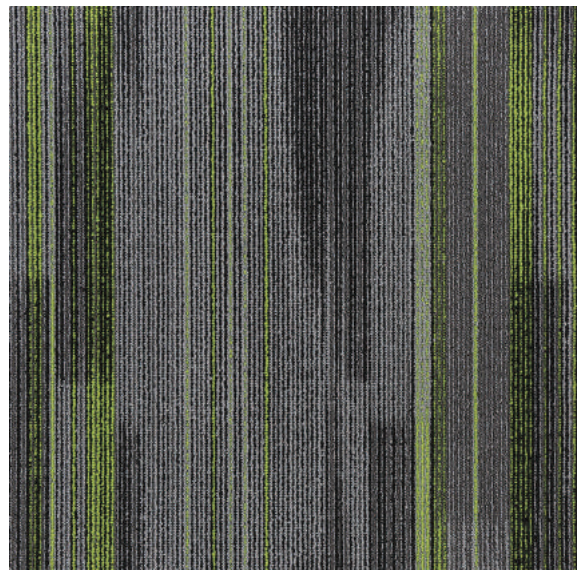
Midnight Black - 201



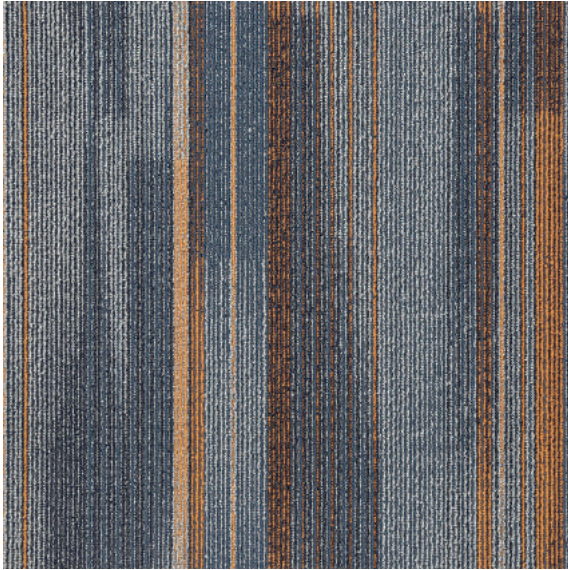
Charcoal Grey - 205



Offset Blue - 206



Stark Green - 207



Charcoal Orange - 209

DESIGN

Product Type	Tile
Construction	Tufted
Surface Texture	Multi-level patterned Loop
Dye Method	Solution Dyed
Gauge	1/12 (6+6)
Surface Material	Nylon+PP
Backing Material	EQ 800g Cushion Backing
Pile Weight	550g/m ²
Pile Height	2.2/3.3/4.5mm
Size	50cmx50cm

PERFORMANCE

Static: AATCC-134 Less than 3.5 KV

Flammability: ASTM E 648 class 1

Smoke Density: ASTM E 662 less than 450

SERVICE

Warranty: 5 Years



EXO

CUSHION-BACKED CARPETS